



ORTHOTECH
Innovative Orthopedic Implant Manufacturer

**Multi-Fix[®]
mini Locking Plate**

Multi-Fix[®] System
Development
Cooperation
Technology

Anatomically Designed Orthopedic Trauma Implants
Innovative Technology Promising High Quality Products

Mini Locking Plate

MFDS. Licence# 15-501 ::: Plate
15-500 ::: Screw

EDI Code C5491180 ::: Plate
C6401180 ::: Cortical Screw
C6402194 ::: Locking Cortical Screw

Material Pure Titanium Gr.2 ::: Plate
Titanium 6AL-4V-ELI ::: Screw

○ Straight Type



Hole	Cat.No
6Hole	P1006
7Hole	P1007
8Hole	P1008
9Hole	P1009
14Hole	P1014

○ T Type



Hole	Cat.No
7Hole	P1207
8Hole	P1208
10Hole	P1210

○ Y Type

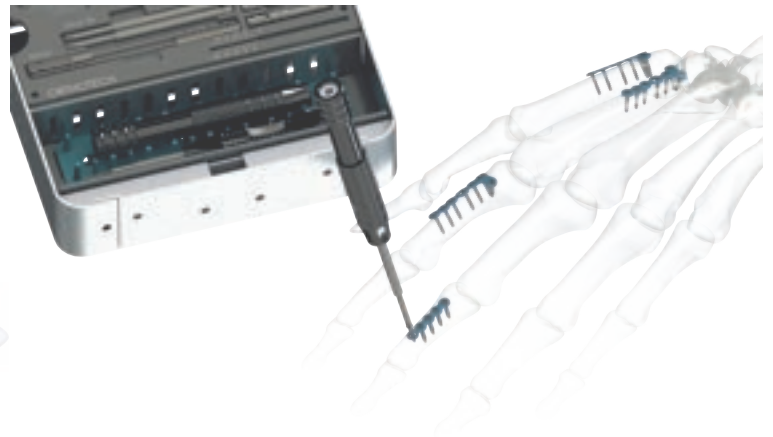


Hole	Cat.No
6Hole	P1306
7Hole	P1307
8Hole	P1308

○ L Type



Hole	Left	Right
6Hole	P11L6	P11R6
7Hole	P11L7	P11R7
8Hole	P11L8	P11R8



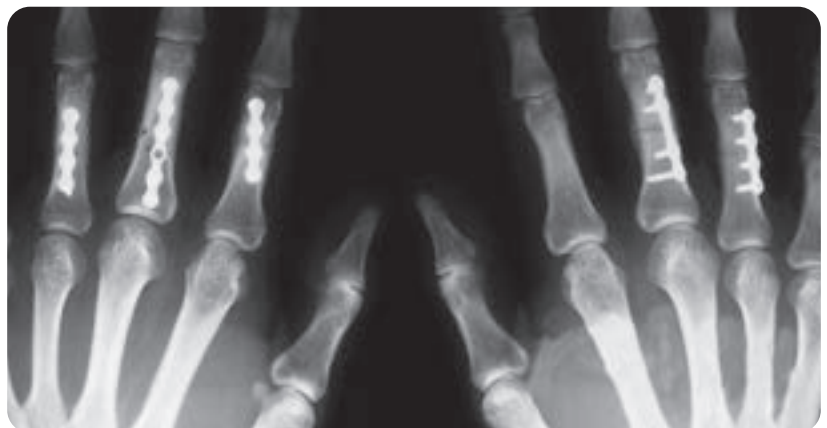
Screw (Ø2.0mm)

Length	Cortical	Locking
6mm	S2403	S2423
7mm	S2404	S2424
8mm	S2405	S2425
9mm	S2406	S2426
10mm	S2407	S2427
12mm	S2409	S2429
14mm	S2411	S2431
16mm	S2413	S2433
18mm	S2415	S2435
20mm	S2417	S2437



Instruments

Cat.No	Description
IT10-10	Tray
ID10-15	Drill Bit - Ø1.5mm - 2.0 Screw Only
IS20-15	Drill Sleeve - Ø1.5mm
IG01-26	Depth Gauge - 26mm
IS03-02	Driver - Pick Up Handle - 2.0 Cross Screw Only
IS40-03	Driver - Pick Up Tip - 2.0 Cross Screw Only
IH10-20	Plate Holder - Mini - 2.0 Cross Screw Only
IS40-04	Screw Forcep - Mini
IS20-16	Drill Guide - Ø1.5mm

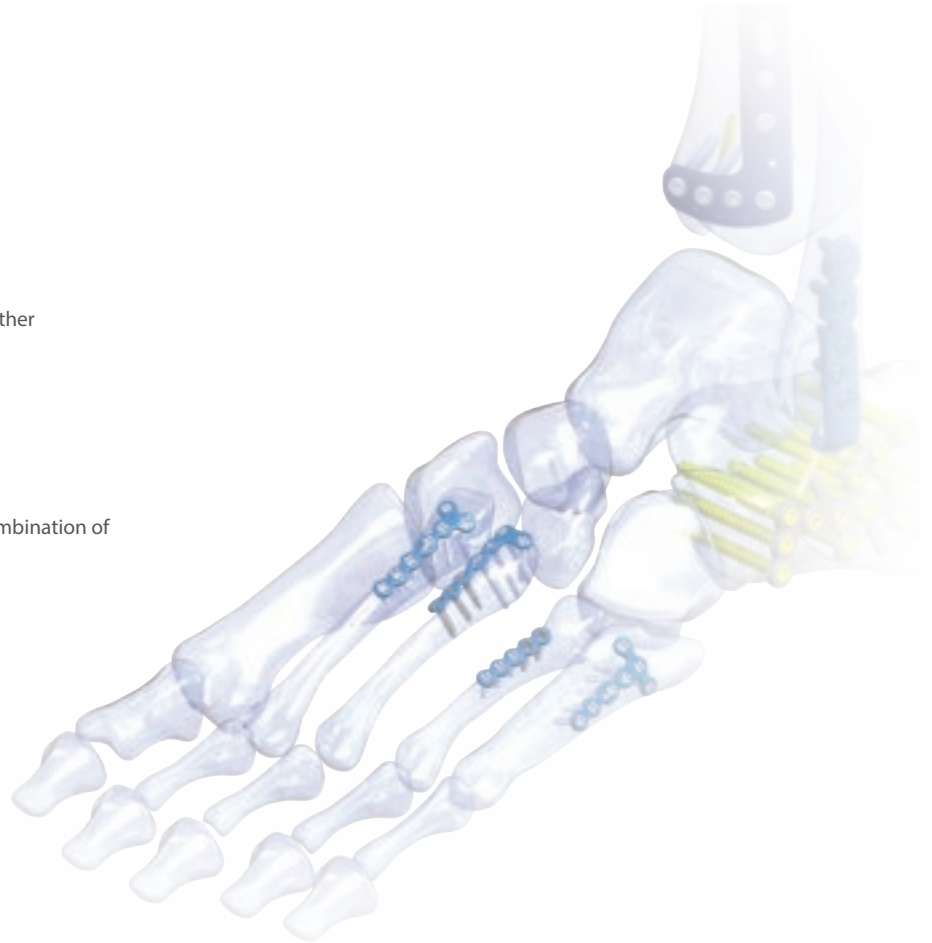


Introduction

- System indicated for hand and foot fractures
- Can supply according to the need and demand
- Both Locking and Non-Locking screws can be used together
- Easy to fix fracture due to the compression hole design

Application

For fixation of fractures, osteotomies, nonunions, and combination of small bones along with small bone fragments



Indication



Hand

Medial Phalange
Proximal Phalange
Metacarpal Bones
Carpal Bones



Foot

Hallux
Middle phalange
Proximal phalange
Metatarsal
Medial cuneiform



78 Yuram-ro, Dong-gu, Daegu, 41059, Rep.of Korea
Tel +82-53-314-7016 Fax +82-53-314-7017

Web <http://www.orthotech.co.kr>
E_mail orthotech@orthotech.co.kr