



# Multi-Fix<sup>®</sup> Anatomical Large Plate System

Multi-Fix<sup>®</sup> System  
Development  
Cooperation  
Technology

Anatomically Designed Orthopedic Trauma Implants  
Innovative Technology Promising High Quality Products



# Instruments and Implants

## Plate Ordering Information



MFDS Licence# 18-783  
Material Pure Titanium Gr.4  
EDI Code C5430280

Screw : Ø4.0 Locking Cortical Screw-Cannulated Type  
Ø3.5 Locking Cortical Screw  
Ø3.5 Cortical Screw



MFDS Licence# 18-783  
Material Pure Titanium Gr.4  
EDI Code C5430280

Screw : Ø4.0 Locking Cortical Screw-Cannulated Type  
Ø3.5 Locking Cortical Screw  
Ø3.5 Cortical Screw



MFDS Licence# 18-783  
Material Pure Titanium Gr.4  
EDI Code C5430280

Screw : Ø4.0 Locking Cortical Screw-Cannulated Type  
Ø3.5 Locking Cortical Screw  
Ø3.5 Cortical Screw



MFDS Licence# 18-783  
Material Pure Titanium Gr.4  
EDI Code C5430280

Screw : Ø4.0 Locking Cortical Screw-Cannulated Type  
Ø3.5 Locking Cortical Screw  
Ø3.5 Cortical Screw

### Multi-Fix® Proximal Tibia Medial Plate

| Order Code | Description  | Color  |
|------------|--|--------|
| P42R04     | Multi-Fix® Proximal Tibia Medial Plate - Right 4H  | Yellow |
| P42R06     | Multi-Fix® Proximal Tibia Medial Plate - Right 5H  |        |
| P42R08     | Multi-Fix® Proximal Tibia Medial Plate - Right 8H  |        |
| P42R10     | Multi-Fix® Proximal Tibia Medial Plate - Right 10H |        |
| P42L04     | Multi-Fix® Proximal Tibia Medial Plate - Left 4H   |        |
| P42L06     | Multi-Fix® Proximal Tibia Medial Plate - Left 5H   |        |
| P42L08     | Multi-Fix® Proximal Tibia Medial Plate - Left 8H   |        |
| P42L10     | Multi-Fix® Proximal Tibia Medial Plate - Left 10H  |        |
|            |  |        |
|            |  |        |

### Multi-Fix® Proximal Tibia Lateral Locking Plate

| Order Code | Description   | Color |
|------------|---|-------|
| P43R04     | Multi-Fix® Proximal Tibia Lateral Locking Plate - Right 4H  | Blue  |
| P43R05     | Multi-Fix® Proximal Tibia Lateral Locking Plate - Right 5H  |       |
| P43R07     | Multi-Fix® Proximal Tibia Lateral Locking Plate - Right 7H  |       |
| P43R09     | Multi-Fix® Proximal Tibia Lateral Locking Plate - Right 9H  |       |
| P43R12     | Multi-Fix® Proximal Tibia Lateral Locking Plate - Right 12H |       |
| P43R16     | Multi-Fix® Proximal Tibia Lateral Locking Plate - Right 16H |       |
| P43L04     | Multi-Fix® Proximal Tibia Lateral Locking Plate - Left 4H   |       |
| P43L05     | Multi-Fix® Proximal Tibia Lateral Locking Plate - Left 5H   |       |
| P43L07     | Multi-Fix® Proximal Tibia Lateral Locking Plate - Left 7H   |       |
| P43L09     | Multi-Fix® Proximal Tibia Lateral Locking Plate - Left 9H   |       |
| P43L12     | Multi-Fix® Proximal Tibia Lateral Locking Plate - Left 12H  |       |
| P43L16     | Multi-Fix® Proximal Tibia Lateral Locking Plate - Left 16H  |       |
|            |   |       |
|            |   |       |
|            |   |       |
|            |   |       |

### Multi-Fix® Distal Tibia Medial Locking Plate

| Order Code | Description  | Color  |
|------------|--|--------|
| P44R04     | Multi-Fix® Distal Tibia Medial Locking Plate - Right 4H  | Yellow |
| P44R05     | Multi-Fix® Distal Tibia Medial Locking Plate - Right 5H  |        |
| P44R07     | Multi-Fix® Distal Tibia Medial Locking Plate - Right 7H  |        |
| P44R09     | Multi-Fix® Distal Tibia Medial Locking Plate - Right 9H  |        |
| P44R12     | Multi-Fix® Distal Tibia Medial Locking Plate - Right 12H |        |
| P44R16     | Multi-Fix® Distal Tibia Medial Locking Plate - Right 16H |        |
| P44L04     | Multi-Fix® Distal Tibia Medial Locking Plate - Left 4H   |        |
| P44L05     | Multi-Fix® Distal Tibia Medial Locking Plate - Left 5H   |        |
| P44L07     | Multi-Fix® Distal Tibia Medial Locking Plate - Left 7H   |        |
| P44L09     | Multi-Fix® Distal Tibia Medial Locking Plate - Left 9H   |        |
| P44L12     | Multi-Fix® Distal Tibia Medial Locking Plate - Left 12H  |        |
| P44L16     | Multi-Fix® Distal Tibia Medial Locking Plate - Left 16H  |        |
|            |  |        |
|            |  |        |
|            |  |        |
|            |  |        |

### Multi-Fix® Distal Tibia Lateral Locking Plate

| Order Code | Description   | Color |
|------------|---|-------|
| P45R04     | Multi-Fix® Distal Tibia Lateral Locking Plate - Right 4H  | Blue  |
| P45R05     | Multi-Fix® Distal Tibia Lateral Locking Plate - Right 5H  |       |
| P45R07     | Multi-Fix® Distal Tibia Lateral Locking Plate - Right 7H  |       |
| P45R09     | Multi-Fix® Distal Tibia Lateral Locking Plate - Right 9H  |       |
| P45R12     | Multi-Fix® Distal Tibia Lateral Locking Plate - Right 12H |       |
| P45R15     | Multi-Fix® Distal Tibia Lateral Locking Plate - Right 15H |       |
| P45L04     | Multi-Fix® Distal Tibia Lateral Locking Plate - Left 4H   |       |
| P45L05     | Multi-Fix® Distal Tibia Lateral Locking Plate - Left 5H   |       |
| P45L07     | Multi-Fix® Distal Tibia Lateral Locking Plate - Left 7H   |       |
| P45L09     | Multi-Fix® Distal Tibia Lateral Locking Plate - Left 9H   |       |
| P45L12     | Multi-Fix® Distal Tibia Lateral Locking Plate - Left 12H  |       |
| P45L15     | Multi-Fix® Distal Tibia Lateral Locking Plate - Left 15H  |       |
|            |   |       |
|            |   |       |
|            |   |       |
|            |   |       |

# Instruments and Implants

## Plate Ordering Information

MFDS Lisence# 18-783  
Material Pure Titanium Gr.4  
EDI Code C5475280

Screw : Ø4.0 Locking Cotical Screw-Cannulated Type  
Ø3.5 Locking Cotical Screw  
Ø3.5 Cortical Screw



### ■ Multi-Fix® Distal Humerus Medial Locking plate

| Order Code | Description  | Color  |
|------------|--|--------|
| P23L03     | Multi-Fix® Distal Humerus Medial Locking Plate - Left 3H   | Yellow |
| P23L05     | Multi-Fix® Distal Humerus Medial Locking Plate - Left 5H   |        |
| P23L07     | Multi-Fix® Distal Humerus Medial Locking Plate - Left 7H   |        |
| P23L10     | Multi-Fix® Distal Humerus Medial Locking Plate - Left 10H  |        |
| P23L13     | Multi-Fix® Distal Humerus Medial Locking Plate - Left 13H  |        |
| P23L16     | Multi-Fix® Distal Humerus Medial Locking Plate - Left 16H  |        |
| P23R03     | Multi-Fix® Distal Humerus Medial Locking Plate - Right 3H  |        |
| P23R05     | Multi-Fix® Distal Humerus Medial Locking Plate - Right 5H  |        |
| P23R07     | Multi-Fix® Distal Humerus Medial Locking Plate - Right 7H  |        |
| P23R10     | Multi-Fix® Distal Humerus Medial Locking Plate - Right 10H |        |
| P23R13     | Multi-Fix® Distal Humerus Medial Locking Plate - Right 13H |        |
| P23R16     | Multi-Fix® Distal Humerus Medial Locking Plate - Right 16H |        |

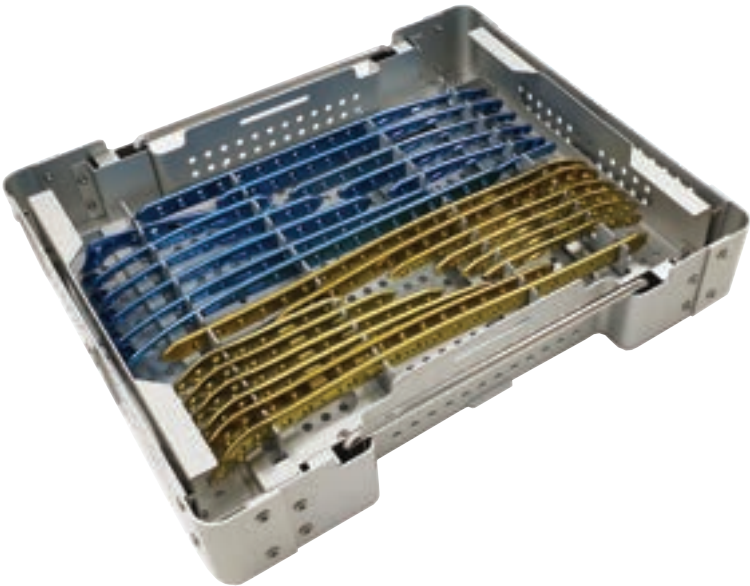
MFDS Lisence# 18-783  
Material Pure Titanium Gr.4  
EDI Code C5475280

Screw : Ø4.0 Locking Cotical Screw-Cannulated Type  
Ø3.5 Locking Cotical Screw  
Ø3.5 Cortical Screw



### ■ Multi-Fix® Distal Humerus Lateral Locking Plate

| Order Code | Description   | Color |
|------------|---|-------|
| P22L03     | Multi-Fix® Distal Humerus Lateral Locking Plate - Left 3H   | Blue  |
| P22L05     | Multi-Fix® Distal Humerus Lateral Locking Plate - Left 5H   |       |
| P22L07     | Multi-Fix® Distal Humerus Lateral Locking Plate - Left 7H   |       |
| P22L10     | Multi-Fix® Distal Humerus Lateral Locking Plate - Left 10H  |       |
| P22L13     | Multi-Fix® Distal Humerus Lateral Locking Plate - Left 13H  |       |
| P22L16     | Multi-Fix® Distal Humerus Lateral Locking Plate - Left 16H  |       |
| P22R03     | Multi-Fix® Distal Humerus Lateral Locking Plate - Right 3H  |       |
| P22R05     | Multi-Fix® Distal Humerus Lateral Locking Plate - Right 5H  |       |
| P22R07     | Multi-Fix® Distal Humerus Lateral Locking Plate - Right 7H  |       |
| P22R10     | Multi-Fix® Distal Humerus Lateral Locking Plate - Right 10H |       |
| P22R13     | Multi-Fix® Distal Humerus Lateral Locking Plate - Right 13H |       |
| P22R16     | Multi-Fix® Distal Humerus Lateral Locking Plate - Right 16H |       |



# Instruments and Implants

## Screw Ordering Information

### ■ Multi-Fix® Ø3.5 Cortical Screw

| Order Code | Description | Color            |
|------------|-------------|------------------|
| S4113      | 3.5 x 20mm  | Non<br>Anodizing |
| S4114      | 3.5 x 22mm  |                  |
| S4115      | 3.5 x 24mm  |                  |
| S4116      | 3.5 x 26mm  |                  |
| S4117      | 3.5 x 28mm  |                  |
| S4118      | 3.5 x 30mm  |                  |
| S4119      | 3.5 x 32mm  |                  |
| S4120      | 3.5 x 34mm  |                  |
| S4121      | 3.5 x 36mm  |                  |
| S4122      | 3.5 x 38mm  |                  |
| S4123      | 3.5 x 40mm  |                  |
| S4124      | 3.5 x 42mm  |                  |
| S4125      | 3.5 x 44mm  |                  |
| S4126      | 3.5 x 46mm  |                  |
| S4127      | 3.5 x 48mm  |                  |
| S4128      | 3.5 x 50mm  |                  |
| S4129      | 3.5 x 55mm  |                  |
| S4130      | 3.5 x 60mm  |                  |
| S4131      | 3.5 x 65mm  |                  |
| S4132      | 3.5 x 70mm  |                  |
| S4133      | 3.5 x 75mm  |                  |
| S4134      | 3.5 x 80mm  |                  |



T15 Driver  
Duuble Drill Sleeve 3.6 / 2.9  
Drill Bit 2.4 / 3.5

### ■ Multi-Fix® Ø3.5 Locking Cotical Screw

| Order Code | Description | Color  |
|------------|-------------|--------|
| S4153      | 3.5 x 20mm  | Yellow |
| S4154      | 3.5 x 22mm  |        |
| S4155      | 3.5 x 24mm  |        |
| S4156      | 3.5 x 26mm  |        |
| S4157      | 3.5 x 28mm  |        |
| S4158      | 3.5 x 30mm  |        |
| S4159      | 3.5 x 32mm  |        |
| S4160      | 3.5 x 34mm  |        |
| S4161      | 3.5 x 36mm  |        |
| S4162      | 3.5 x 38mm  |        |
| S4163      | 3.5 x 40mm  |        |
| S4164      | 3.5 x 42mm  |        |
| S4165      | 3.5 x 44mm  |        |
| S4166      | 3.5 x 46mm  |        |
| S4167      | 3.5 x 48mm  |        |
| S4168      | 3.5 x 50mm  |        |
| S4169      | 3.5 x 55mm  |        |
| S4170      | 3.5 x 60mm  |        |
| S4171      | 3.5 x 65mm  |        |
| S4172      | 3.5 x 70mm  |        |
| S4173      | 3.5 x 75mm  |        |
| S4174      | 3.5 x 80mm  |        |



T15 Driver  
Drill Sleeve 2.9  
Drill Bit 2.8

### ■ Multi-Fix® Ø4.0 Locking Cortical Screw-Cannulated Type

| Order Code | Description | Color |
|------------|-------------|-------|
| S4196H     | 4.0 x 26mm  | Blue  |
| S4197H     | 4.0 x 28mm  |       |
| S4198H     | 4.0 x 30mm  |       |
| S4199H     | 4.0 x 32mm  |       |
| S4200H     | 4.0 x 34mm  |       |
| S4201H     | 4.0 x 36mm  |       |
| S4202H     | 4.0 x 38mm  |       |
| S4203H     | 4.0 x 40mm  |       |
| S4204H     | 4.0 x 42mm  |       |
| S4205H     | 4.0 x 44mm  |       |
| S4206H     | 4.0 x 46mm  |       |
| S4207H     | 4.0 x 48mm  |       |
| S4208H     | 4.0 x 50mm  |       |
| S4209H     | 4.0 x 55mm  |       |
| S4210H     | 4.0 x 60mm  |       |
| S4211H     | 4.0 x 65mm  |       |
| S4212H     | 4.0 x 70mm  |       |
| S4213H     | 4.0 x 75mm  |       |
| S4214H     | 4.0 x 80mm  |       |



H2.5 Driver  
Drill Sleeve 3.4  
Drill Bit 3.3

MFDS Licence# 19-35  
Material Titanium Alloy  
EDI Code Cortical Screw C6401380  
Locking Cortical Screw C6402294  
Locking Cortical Screw Cannulated Type C6411528



# Instruments and Implants

## Plate Ordering Information

MFDS Liscence# 18-783

Material Pure Titanium Gr.4

EDI Code C5430280

Screw : Ø5.0 Locking Cotical Screw-Cannulated Type  
Ø4.5 Locking Cotical Screw  
Ø4.5 Cortical Screw



### ■ Multi-Fix® Distal Femur Locking Plate

| Order Code | Description                                       | Color |
|------------|---|-------|
| P41R04     | Multi-Fix® Distal Femur Locking Plate - Right 4H  | Blue  |
| P41R05     | Multi-Fix® Distal Femur Locking Plate - Right 5H  |       |
| P41R07     | Multi-Fix® Distal Femur Locking Plate - Right 7H  |       |
| P41R09     | Multi-Fix® Distal Femur Locking Plate - Right 9H  |       |
| P41R12     | Multi-Fix® Distal Femur Locking Plate - Right 12H |       |
| P41R15     | Multi-Fix® Distal Femur Locking Plate - Right 15H |       |
| P41L04     | Multi-Fix® Distal Femur Locking Plate - Left 4H   |       |
| P41L05     | Multi-Fix® Distal Femur Locking Plate - Left 5H   |       |
| P41L07     | Multi-Fix® Distal Femur Locking Plate - Left 7H   |       |
| P41L09     | Multi-Fix® Distal Femur Locking Plate - Left 9H   |       |
| P41L12     | Multi-Fix® Distal Femur Locking Plate - Left 12H  |       |
| P41L15     | Multi-Fix® Distal Femur Locking Plate - Left 15H  |       |

MFDS Liscence# 18-783

Material Pure Titanium Gr.4

EDI Code C5406080

Screw : Ø5.0 Locking Cotical Screw-Cannulated Type  
Ø4.5 Locking Cotical Screw  
Ø4.5 Cortical Screw



### ■ Multi-Fix® Locking Compression Plate - Broad Type

| Order Code | Description   | Color         |
|------------|---|---------------|
| P48B06     | Multi-Fix® Locking Compression Plate - Broad B type 6H        | Non Anodizing |
| P48B08S    | Multi-Fix® Locking Compression Plate - Broad B type 8H Small  |               |
| P48B08L    | Multi-Fix® Locking Compression Plate - Broad B type 8H Large  |               |
| P48B10S    | Multi-Fix® Locking Compression Plate - Broad B type 10H Small |               |
| P48B10L    | Multi-Fix® Locking Compression Plate - Broad B type 10H Large |               |
| P48B12     | Multi-Fix® Locking Compression Plate - Broad B type 12H       |               |
| P48B14     | Multi-Fix® Locking Compression Plate - Broad B type 14H       |               |
| P48B16     | Multi-Fix® Locking Compression Plate - Broad B type 16H       |               |

MFDS Liscence# 18-783

Material Pure Titanium Gr.4

EDI Code C5406080

Screw : Ø5.0 Locking Cotical Screw-Cannulated Type  
Ø4.5 Locking Cotical Screw  
Ø4.5 Cortical Screw



### ■ Multi-Fix® Locking Compression Plate - Narrow Type

| Order Code | Description  | Color         |
|------------|--|---------------|
| P49B06     | Multi-Fix® Locking Compression Plate - Narrow B type 6H        | Non Anodizing |
| P49B07     | Multi-Fix® Locking Compression Plate - Narrow B type 7H        |               |
| P49B08     | Multi-Fix® Locking Compression Plate - Narrow B type 8H        |               |
| P49B09     | Multi-Fix® Locking Compression Plate - Narrow B type 9H        |               |
| P49B10     | Multi-Fix® Locking Compression Plate - Narrow B type 10H       |               |
| P49B11     | Multi-Fix® Locking Compression Plate - Narrow B type 11H       |               |
| P49B12S    | Multi-Fix® Locking Compression Plate - Narrow B type 12H Small |               |
| P49B12L    | Multi-Fix® Locking Compression Plate - Narrow B type 12H Large |               |
| P49B14     | Multi-Fix® Locking Compression Plate - Narrow B type 14H       |               |

# Instruments and Implants

## Screw Ordering Information

### ■ Multi-Fix® Ø4.5 Cortical Screw

| Order Code | Description | Color            |
|------------|-------------|------------------|
| S4505      | 4.5 x 24mm  | Non<br>Anodizing |
| S4506      | 4.5 x 26mm  |                  |
| S4507      | 4.5 x 28mm  |                  |
| S4508      | 4.5 x 30mm  |                  |
| S4509      | 4.5 x 32mm  |                  |
| S4510      | 4.5 x 34mm  |                  |
| S4511      | 4.5 x 36mm  |                  |
| S4512      | 4.5 x 38mm  |                  |
| S4513      | 4.5 x 40mm  |                  |
| S4514      | 4.5 x 42mm  |                  |
| S4515      | 4.5 x 44mm  |                  |
| S4516      | 4.5 x 46mm  |                  |
| S4517      | 4.5 x 48mm  |                  |
| S4518      | 4.5 x 50mm  |                  |
| S4519      | 4.5 x 55mm  |                  |
| S4520      | 4.5 x 60mm  |                  |
| S4521      | 4.5 x 65mm  |                  |
| S4522      | 4.5 x 70mm  |                  |
| S4523      | 4.5 x 75mm  |                  |
| S4524      | 4.5 x 80mm  |                  |
| S4525      | 4.5 x 85mm  |                  |
| S4526      | 4.5 x 90mm  |                  |



T25 Driver  
Drill Sleeve 3.8  
Drill Bit 3.7

### ■ Multi-Fix® Ø4.5 Locking Cortical Screw

| Order Code | Description | Color  |
|------------|-------------|--------|
| S4535      | 4.5 x 24mm  | Yellow |
| S4536      | 4.5 x 26mm  |        |
| S4537      | 4.5 x 28mm  |        |
| S4538      | 4.5 x 30mm  |        |
| S4539      | 4.5 x 32mm  |        |
| S4540      | 4.5 x 34mm  |        |
| S4541      | 4.5 x 36mm  |        |
| S4542      | 4.5 x 38mm  |        |
| S4543      | 4.5 x 40mm  |        |
| S4544      | 4.5 x 42mm  |        |
| S4545      | 4.5 x 44mm  |        |
| S4546      | 4.5 x 46mm  |        |
| S4547      | 4.5 x 48mm  |        |
| S4548      | 4.5 x 50mm  |        |
| S4549      | 4.5 x 55mm  |        |
| S4550      | 4.5 x 60mm  |        |
| S4551      | 4.5 x 65mm  |        |
| S4552      | 4.5 x 70mm  |        |
| S4553      | 4.5 x 75mm  |        |
| S4554      | 4.5 x 80mm  |        |
| S4555      | 4.5 x 85mm  |        |
| S4556      | 4.5 x 90mm  |        |



T25 Driver  
Duuble Drill Sleeve 4.6 / 3.3  
Drill Bit 3.2 / 4.5

### ■ Multi-Fix® Ø5.0 Locking Cortical Screw-Cannulated Type

| Order Code | Description | Color  |
|------------|-------------|--------|
| S4808H     | 5.0 x 30mm  | Purple |
| S4809H     | 5.0 x 32mm  |        |
| S4810H     | 5.0 x 34mm  |        |
| S4811H     | 5.0 x 36mm  |        |
| S4812H     | 5.0 x 38mm  |        |
| S4813H     | 5.0 x 40mm  |        |
| S4814H     | 5.0 x 42mm  |        |
| S4815H     | 5.0 x 44mm  |        |
| S4816H     | 5.0 x 46mm  |        |
| S4817H     | 5.0 x 48mm  |        |
| S4818H     | 5.0 x 50mm  |        |
| S4819H     | 5.0 x 55mm  |        |
| S4820H     | 5.0 x 60mm  |        |
| S4821H     | 5.0 x 65mm  |        |
| S4822H     | 5.0 x 70mm  |        |
| S4823H     | 5.0 x 75mm  |        |
| S4824H     | 5.0 x 80mm  |        |
| S4825H     | 5.0 x 85mm  |        |
| S4826H     | 5.0 x 90mm  |        |



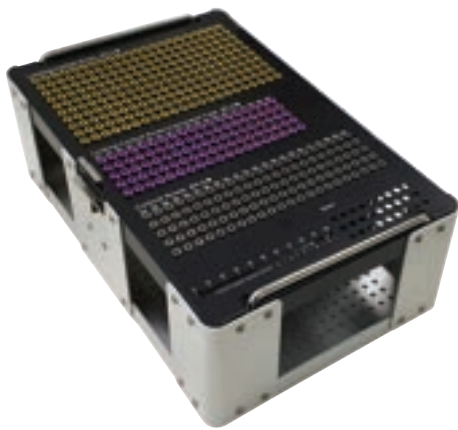
H3.5 Driver  
Drill Sleeve 4.3  
Drill Bit 4.2

MFDS Liscence# 19-35  
Material Titanium Alloy  
EDI Code Cortical Screw C6401380  
Locking Cortical Screw C6402294  
Locking Cortical Screw Cannulated Type C6411528



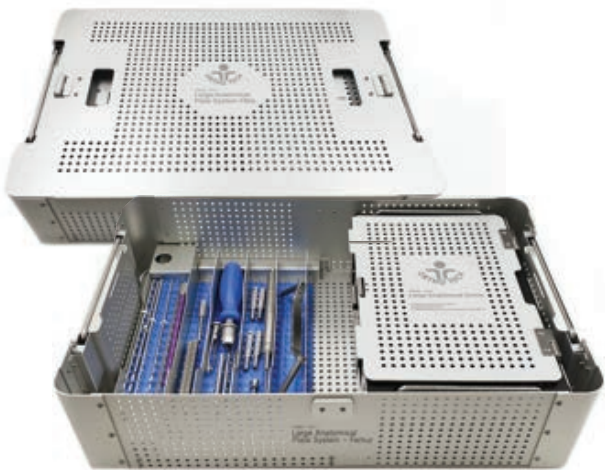
# Instruments and Implants

## Instruments Ordering Information



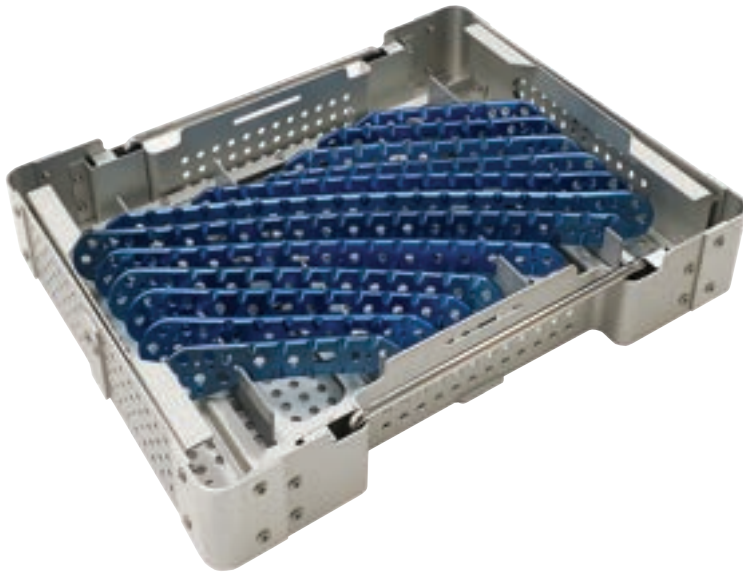
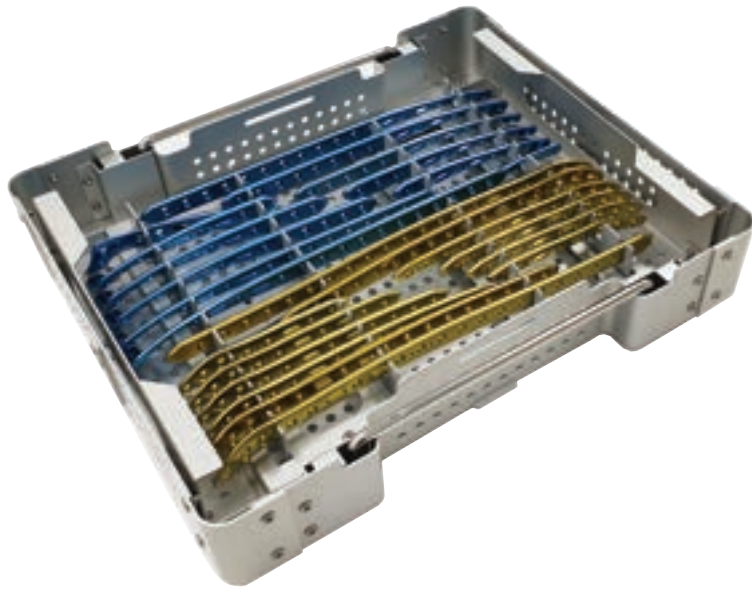
### ■ Large Tibia Instruments Set

| Order Code | Description                                  |
|------------|--|
| IG41-14    | 1.4 Guide Pin                                |
| IG41-18    | 1.8 Wire Sleeve                              |
| ID41-33    | 3.3 Drill Bit                                |
| ID41-28    | 2.8 Drill Bit                                |
| ID41-24    | 2.4 Drill Bit                                |
| ID41-35    | 3.5 Drill Bit                                |
| IS08-01    | Screw Driver Handle                          |
| IS41-05    | Pick Up                                      |
| IS05-T15   | Screw Driver Shaft T15                       |
| IG41-34    | 3.4 Drill Sleeve                             |
| IG41-29    | 2.9 Drill Sleeve                             |
| IG41-2936  | 3.6/2.9 Double Drill Sleeve                  |
| IG41-01    | Depth Gauge                                  |
| IG41-02    | Cannulated Depth Gauge                       |
| IS03-H25   | Screw Driver Shaft-Hex2.5                    |
| IS04-H25   | Cannulated Screw Driver Shaft-Hex2.5         |
| IF41-01    | Reduction Forceps with Three Jaws            |
| IF41-02    | Pointed Reduction Forceps                    |
| IF41-03    | Bone Holding Forceps (Self-Centering)        |
| IT41-01    | Large plate System - Case / Tibia Instrument |
| IT41-02    | Large plate System - Case / Tibia Screw      |
| IT41-03    | Large plate System - Case / Tibia Plate      |



### ■ Large Femur Instruments Set

| Order Code | Description                                  |
|------------|--|
| IG42-18    | 1.8 Guide Pin                                |
| IG42-20    | 2 Wire Sleeve                                |
| ID42-42    | 4.2 Drill Bit                                |
| ID42-37    | 3.7 Drill Bit                                |
| ID42-45    | 4.5 Drill Bit                                |
| ID42-32    | 3.2 Drill Bit                                |
| IS08-01    | Screw Driver Handle                          |
| IS42-06    | Pick Up                                      |
| IS05-T25   | Screw Driver Shaft T25                       |
| IG42-43    | 4.3 Drill Sleeve                             |
| IG42-38    | 3.8 Drill Sleeve                             |
| IG42-3346  | 4.6/3.3 Double Drill Sleeve                  |
| IG42-01    | Depth Gauge                                  |
| IG42-02    | Cannulated Depth Gauge                       |
| IS03-H35   | Screw Driver Shaft / Hex 3.5                 |
| IS04-H35   | Cannulated Screw Driver Shaft / Hex 3.5      |
| IS09-40    | Pick Up - Femur                              |
| IF41-01    | Reduction Forceps with Three Jaws            |
| IF41-02    | Pointed Reduction Forceps                    |
| IF41-03    | Bone Holding Forceps (Self-Centering)        |
| IT42-01    | Large plate System - Case / Femur Instrument |
| IT42-02    | Large plate System - Case / Femur Screw      |
| IT42-03    | Large plate System - Case / Femur Plate      |





78 Yuram-ro, Dong-gu, Daegu, 41059, Rep.of Korea  
Tel +82-53-314-7016 Fax +82-53-314-7017

Web <http://www.orthotech.co.kr>  
E\_mail [orthotech@orthotech.co.kr](mailto:orthotech@orthotech.co.kr)

ORTHO TECH Information In Compliance With The  
Korea Food and Drug Regulations Place a Notice That The Product Produced.

OTBR-18783E 2022-04-21 Rev.4