

# Multi-Fix<sup>®</sup>

## Large Plate & CHS Plate System

*Broad Plate  
Narrow Plate  
CHS Plate  
Trochanter Stabilizing Plate*



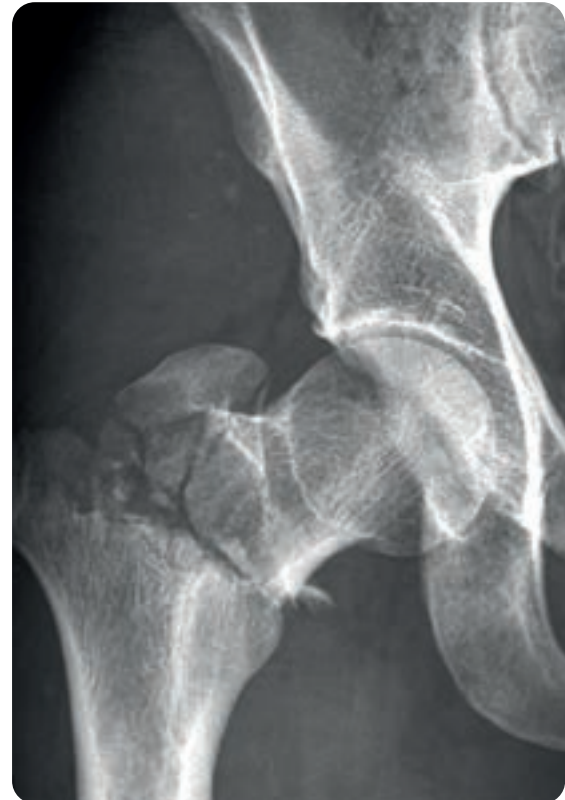


CHS / Material : Pure Titanium Gr.2

Screw / Material : TI-6AL-4V-ELI-ALLOY (ASTM F136)

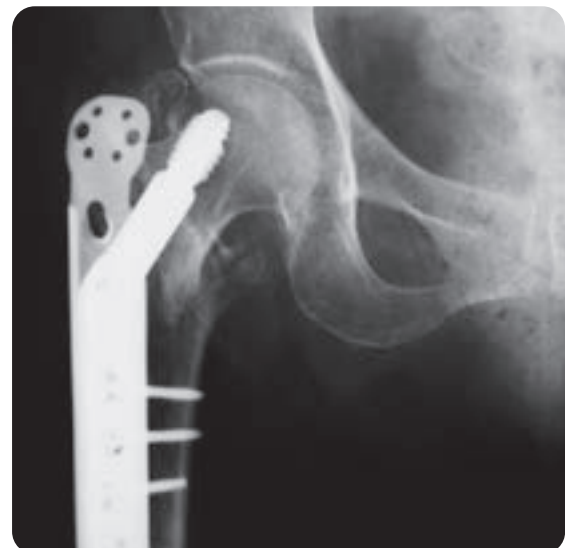
### INDICATIONS

- Intertrochanteric Fracture
- Pertrochanteric Fracture
- Subtrochanteric Fracture
- Femoral Neck Fracture
- Femoral Fractures
- Tibial Fractures



### INTRODUCTION

- Narrow Self Compression Plate
- Broad Self Compression Plate
- 135° CHS Plate [ Long Type ]
- 135° CHS Plate [ Short Type ]
- Trochanteric Stabilizaing Plate
- Lag Screw [ Ø12.5mm ]
- Compression Screw [ Ø 4.5mm ]
- Malleolar [ Ø 4.5mm ]
- Cortical Screw [ Ø 4.5mm ]
- Cancellous Screw [ Ø 6.5mm / Thread 16mm ]
- Cancellous Screw [ Ø 6.5mm / Thread 32mm ]
- Cancellous Screw [ Ø 6.5mm / Thread Full ]



## <Multi-Fix> Large Plate & CHS Plate List

### ▪ Narrow Self Compression Plate



F401	4Hole
F402	5Hole
F403	6Hole
F404	7Hole
F405	8Hole
F406	9Hole
F407	10Hole
F408	11Hole
F409	12Hole

### ▪ Broad Self Compression Plate



F411	6Hole
F412	7Hole
F413	8Hole
F414	9Hole
F415	10Hole
F416	12Hole
F417	14Hole
F418	16Hole

### 135° CHS Plate [ Long Type ]



F501	3Hole
F502	4Hole
F503	5Hole
F504	6Hole
F506	8Hole

### 135° CHS Plate [ Short Type ]



F511	3Hole
F512	4Hole
F513	5Hole
F514	6Hole

### Trochanter Stabilizing Plate [ TSP ]



F591 [TSP]

### ▪ Large Plate Screw - Cancellous Ø6.5 [ 16mm ]



G741	6.5 x 20mm
G742	6.5 x 25mm
G743	6.5 x 30mm
G744	6.5 x 35mm
G745	6.5 x 40mm
G746	6.5 x 45mm
G747	6.5 x 50mm
G748	6.5 x 55mm
G749	6.5 x 60mm
G750	6.5 x 65mm
G751	6.5 x 70mm
G752	6.5 x 75mm
G753	6.5 x 80mm
G754	6.5 x 85mm
G755	6.5 x 90mm
G756	6.5 x 95mm
G757	6.5 x 100mm

### ▪ Large Plate Screw - Cancellous Ø6.5 [ 32mm ]



G764	6.5 x 40mm
G765	6.5 x 45mm
G766	6.5 x 50mm
G767	6.5 x 55mm
G768	6.5 x 60mm
G769	6.5 x 65mm
G770	6.5 x 70mm
G771	6.5 x 75mm
G772	6.5 x 80mm
G773	6.5 x 85mm
G774	6.5 x 90mm
G775	6.5 x 95mm
G776	6.5 x 100mm

### ▪ Large Plate Screw - Cancellous Ø6.5 [ Full ]



G764	6.5 x 40mm
G765	6.5 x 45mm
G766	6.5 x 50mm
G767	6.5 x 55mm
G768	6.5 x 60mm
G769	6.5 x 65mm
G770	6.5 x 70mm
G771	6.5 x 75mm
G772	6.5 x 80mm
G773	6.5 x 85mm
G774	6.5 x 90mm
G775	6.5 x 95mm
G776	6.5 x 100mm

### Large Plate Screw - Cortical Ø4.5 Self



G701	4.5 x 20mm
G702	4.5 x 22mm
G703	4.5 x 24mm
G704	4.5 x 26mm
G705	4.5 x 28mm
G706	4.5 x 30mm
G707	4.5 x 32mm
G708	4.5 x 34mm
G709	4.5 x 36mm
G710	4.5 x 38mm
G711	4.5 x 40mm
G712	4.5 x 42mm
G713	4.5 x 44mm
G714	4.5 x 46mm
G715	4.5 x 48mm
G716	4.5 x 50mm
G717	4.5 x 52mm
G718	4.5 x 54mm
G719	4.5 x 56mm
G720	4.5 x 58mm
G721	4.5 x 60mm
G722	4.5 x 64mm
G723	4.5 x 70mm

### ▪ Large Plate Screw - Malleolar Ø4.5 Self



G731	4.5 x 25mm
G732	4.5 x 30mm
G733	4.5 x 35mm
G734	4.5 x 40mm
G735	4.5 x 45mm
G736	4.5 x 50mm
G737	4.5 x 55mm
G738	4.5 x 60mm
G739	4.5 x 65mm
G740	4.5 x 70mm

▪ Order

### CHS Plate - Compression Screw Ø4.5



F581	26mm
F582	31mm
F583	36mm
F584	41mm

### CHS Plate - Lag Screw Ø 12.5



F551	50mm
F552	55mm
F553	60mm
F554	65mm
F555	70mm
F556	75mm
F557	80mm
F558	85mm
F559	90mm
F560	95mm
F561	100mm
F562	105mm
F563	110mm

## <Multi-Fix> Large & CHS Plate System Instrument

C531 Double Drill Sleeve 4.5x3.2



C532 Double Drill Sleeve 6.5x3.2



C534 Dcp Drill Guide 4.5



C535 Drill Bit 3.2



C536 Drill Bit 4.5



C537 Depth - Gauge Large



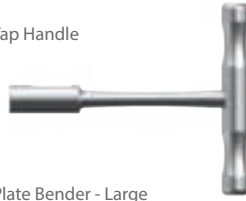
C538 Taps 4.5



C539 Taps 6.5



C540 Tap Handle



C541 Plate Bender - Large



C542 Screw Driver 3.5



C551 Angle Guide 135



C552 Guide Pin



C553 Depth - Gauge



C554 Reamer Short



C555 Reamer Long



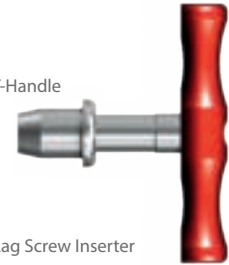
C556 Reamer Shaft



C557 Lag Screw Tap



C558 T-Handle



C559 Lag Screw Inserter



C560 Impactor



C561 Lag Screw Driver



C562 Removal Driver



C563 Large Screw Pick Up



C564 6.5 Cannulated Power Driver



C565 6.5 Cannulated Reamer



### Large Plate System - Instrument Chart

Item	Cat.No.	Name
Large Plate System	C531	Double Drill Sleeve 4.5x3.2
	C532	Double Drill Sleeve 6.5x3.2
	C534	Dcp Drill Guide 4.5
	C535	Drill Bit 3.2
	C536	Drill Bit 4.5
	C537	Depth - Gauge Large
	C538	Taps 4.5
	C539	Taps 6.5
	C540	Tap Handle
	C541	Plate Bender - Large
C542	Screw Driver 3.5	
C543	Large Plate & CHS Case	

### DHS Plate System - Instrument Chart

Item	Cat.No.	Name
DHS Plate System	C551	Angle Guide 135
	C552	Guide Pin
	C553	Depth - Gauge
	C554	Reamer Short
	C555	Reamer Long
	C556	Reamer Shaft
	C557	Lag Screw Tap
	C558	T-Handle
	C559	Lag Screw inserter
	C560	Impactor
	C561	lag Screw Driver
	C562	Removal Driver
	C563	Large Screw Pick up
	C564	6.5 Cannulated Power Driver
	C565	6.5 Cannulated Reamer



## ORTHOTECH

Address: 78 Yuram-ro, Dong-gu, Daegu, 41059, Rep.of Korea

TEL. 053-314-7017 FAX. 053-314-7017 E-mail. orthotech@orthotech.co.kr

Ortho tech information in compliance with the Korea Food and Drug Regulations place a notice that the product produced.

Etc.

- This product is a medical device.
- The recycling of single-use medical devices is prohibited.
- User-sterile products.